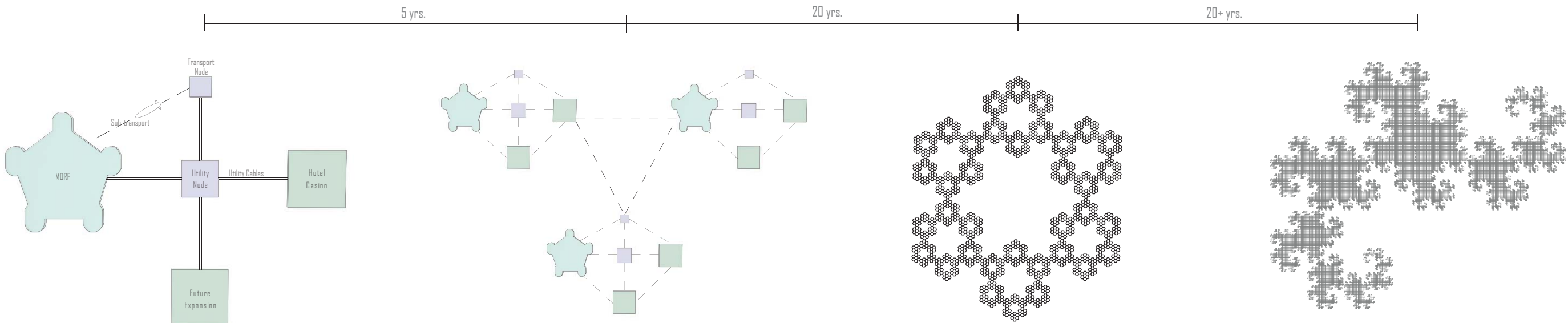




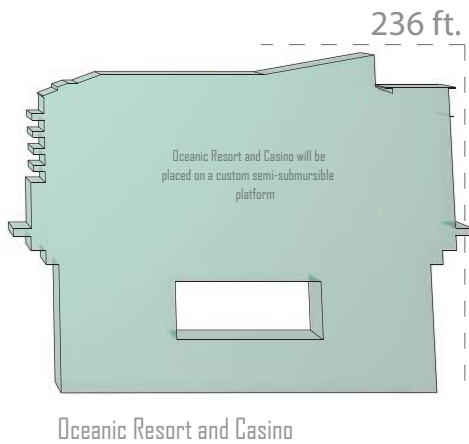
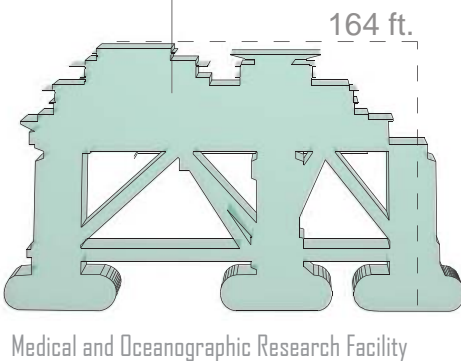
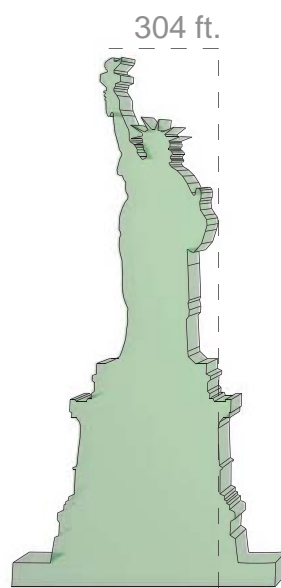
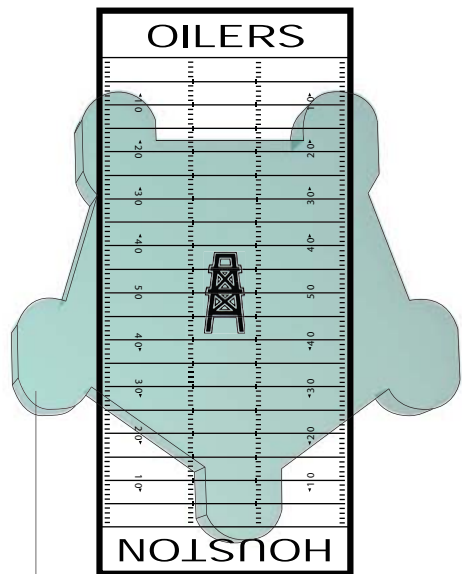
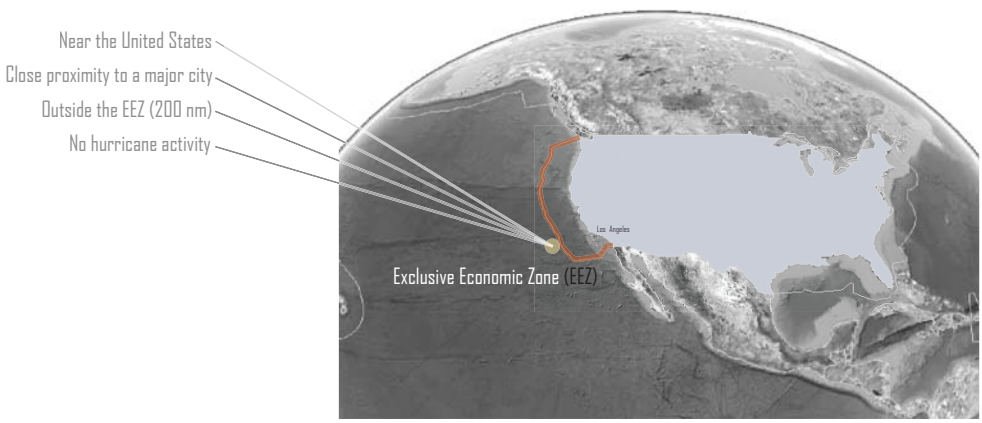
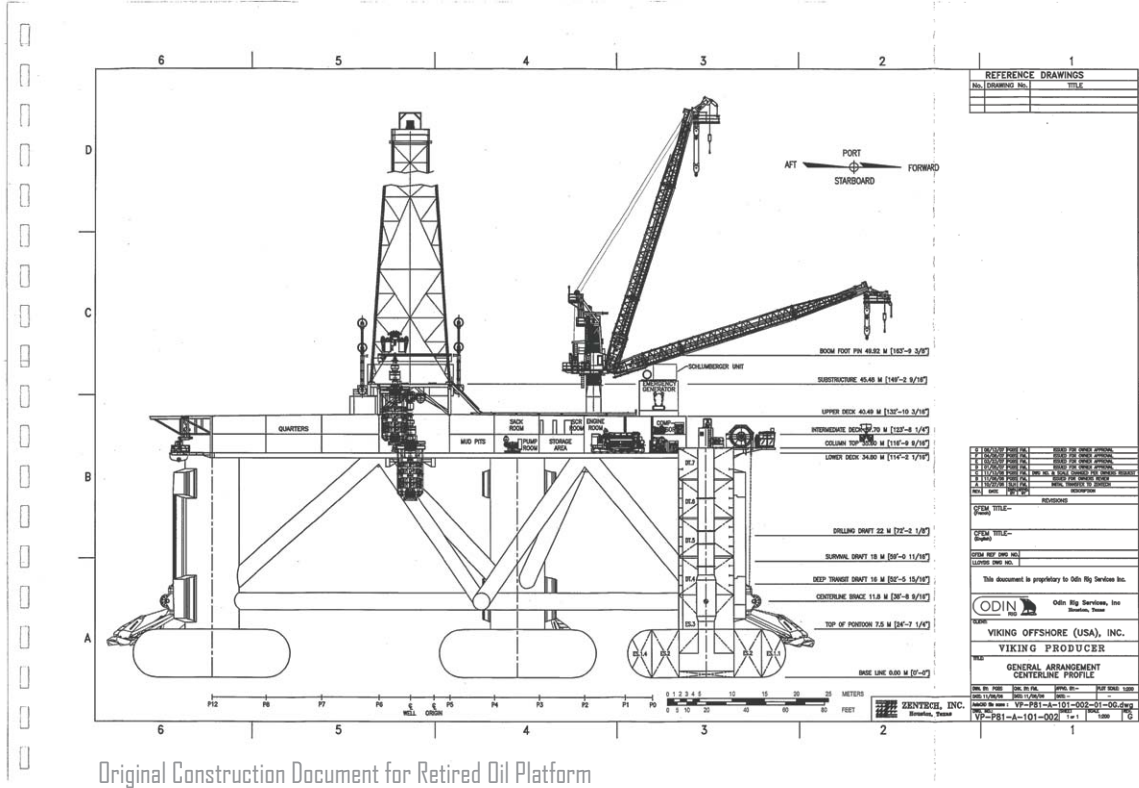
The Extreme Environment Design Studio has developed a network of oceanic vessels designed to be the catalyst in a twenty year plan for a fully self-sufficient off-shore community.



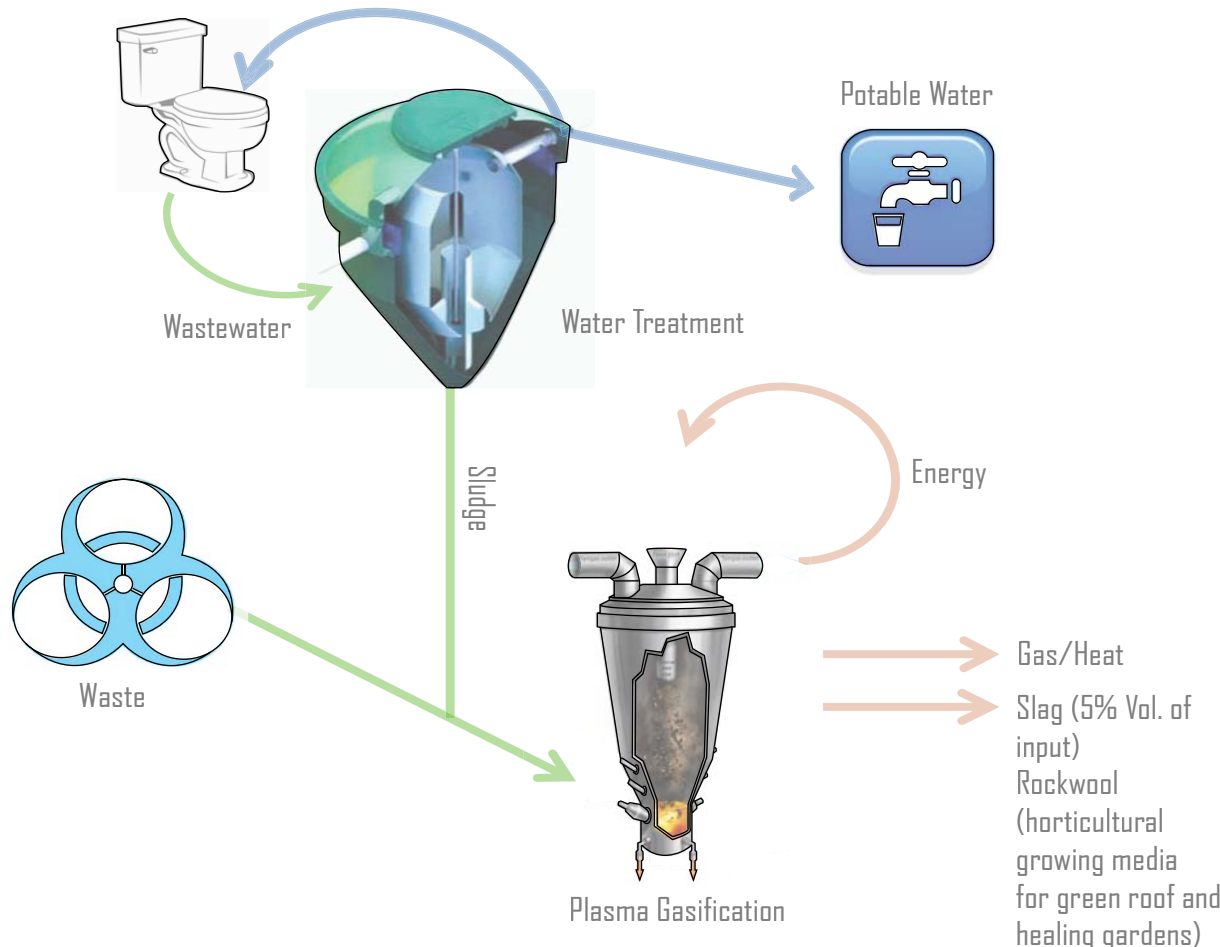
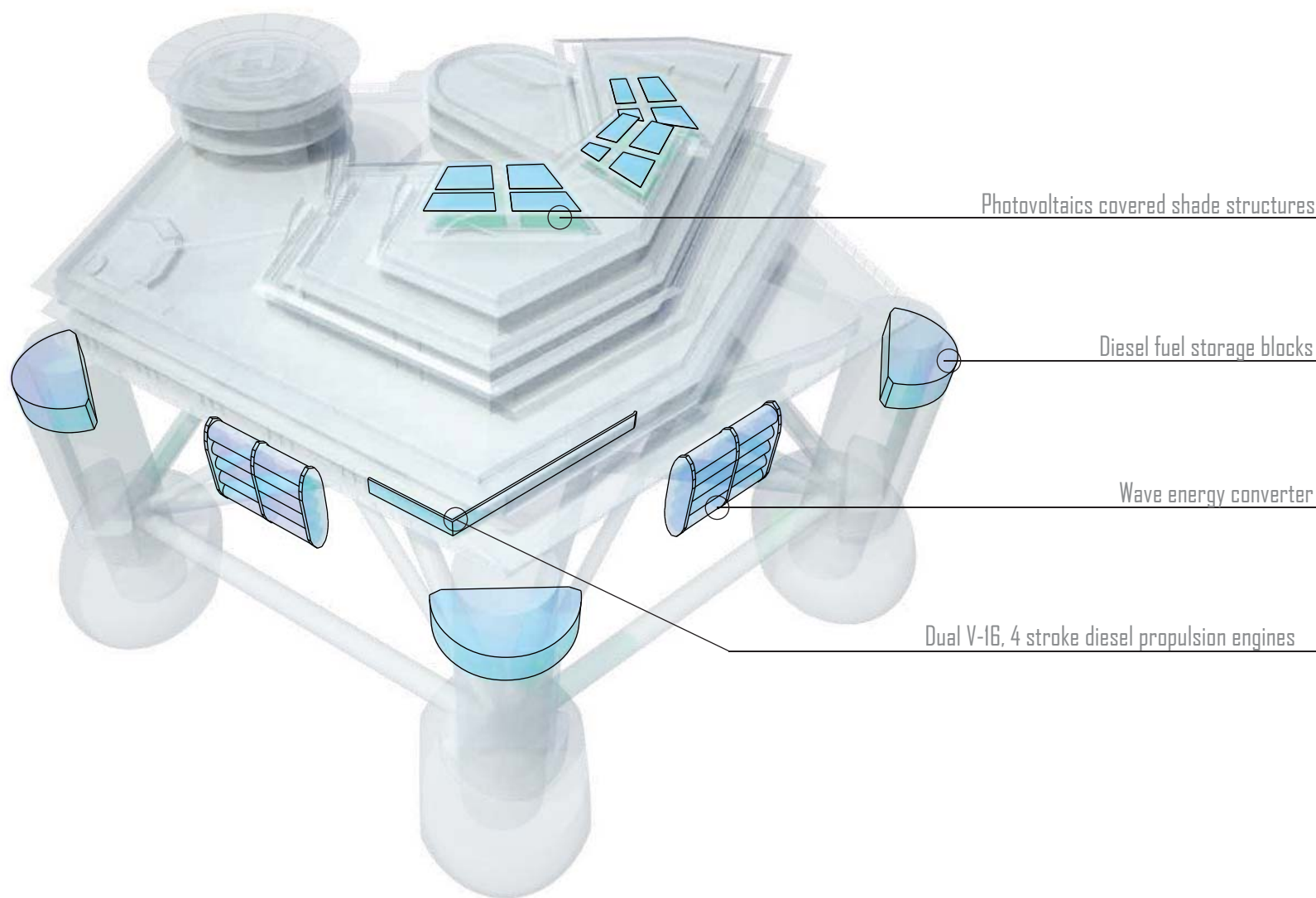
Location

Retired Oil Platform

A retired, pentagon-shaped floating oil platform, known as a Floating Production System (FPS), is currently docked in Galveston. Its original owners went bankrupt, resulting in its current ownership by the ship yard where it resides. The oil platform has an existing built footprint of 22,120 square feet.



Energy



Business Plan

Medical and Oceanographic Research Facility (MORF)

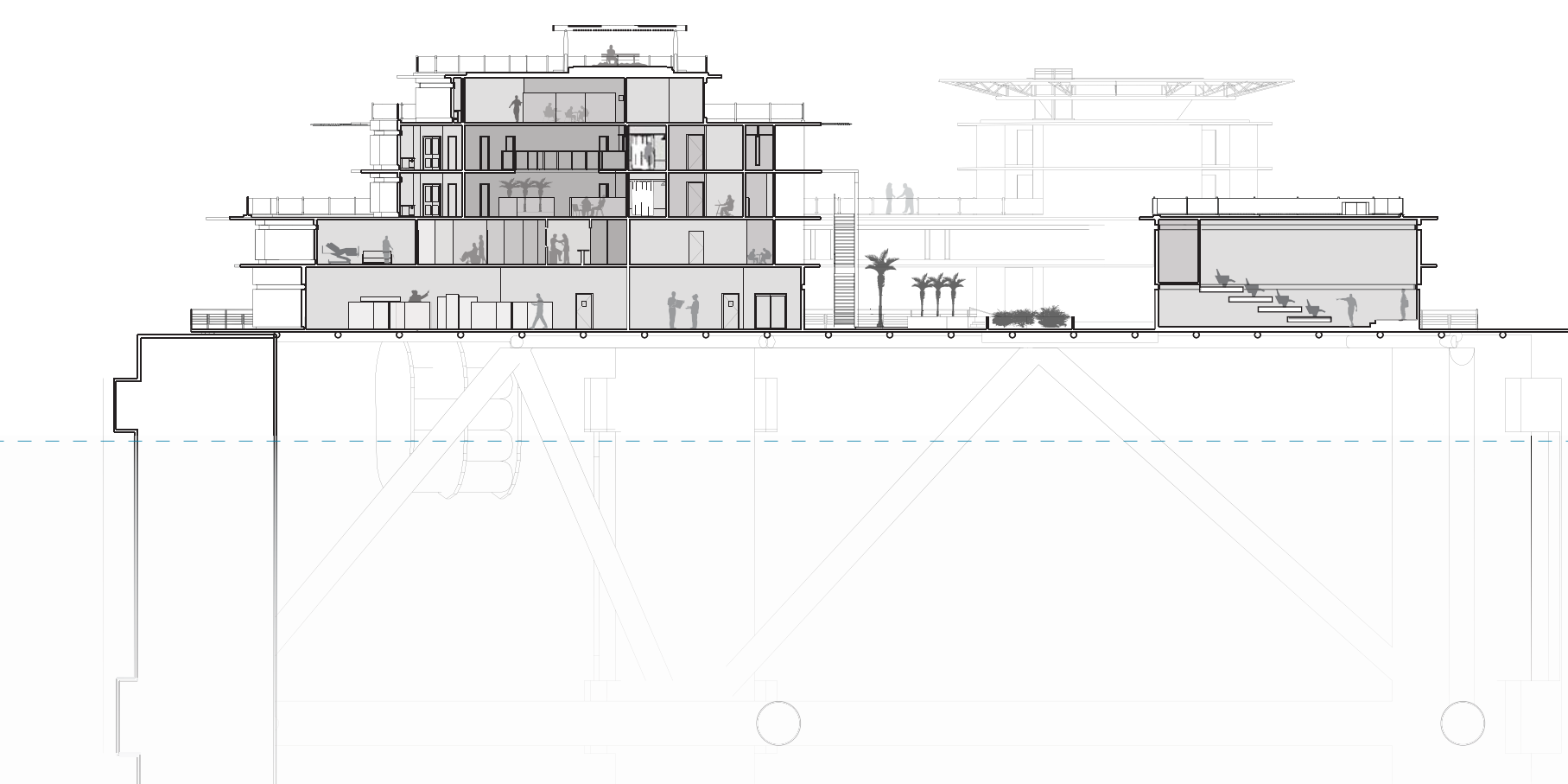
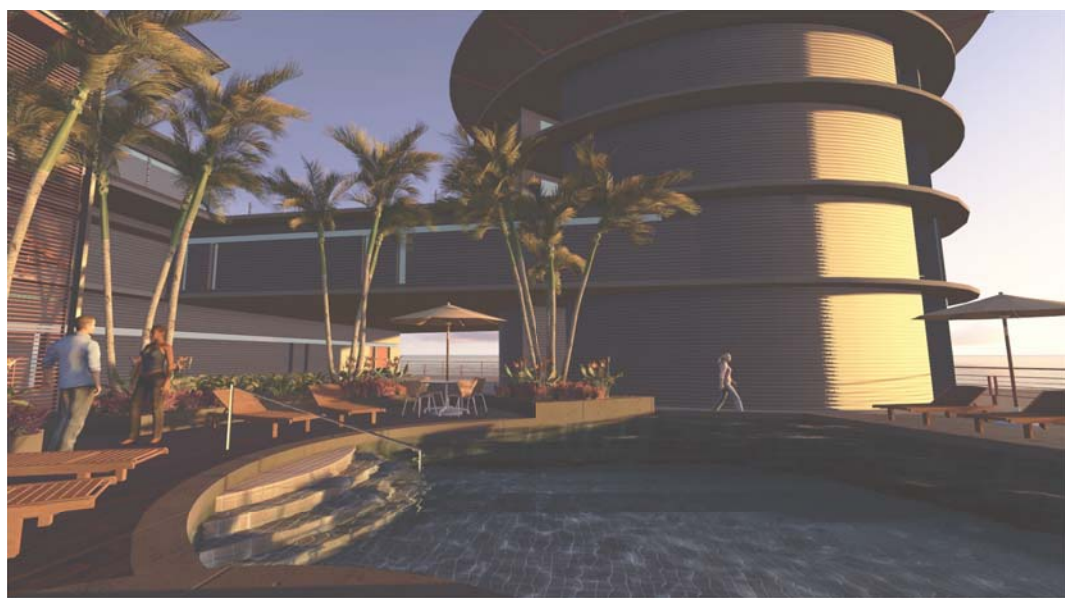
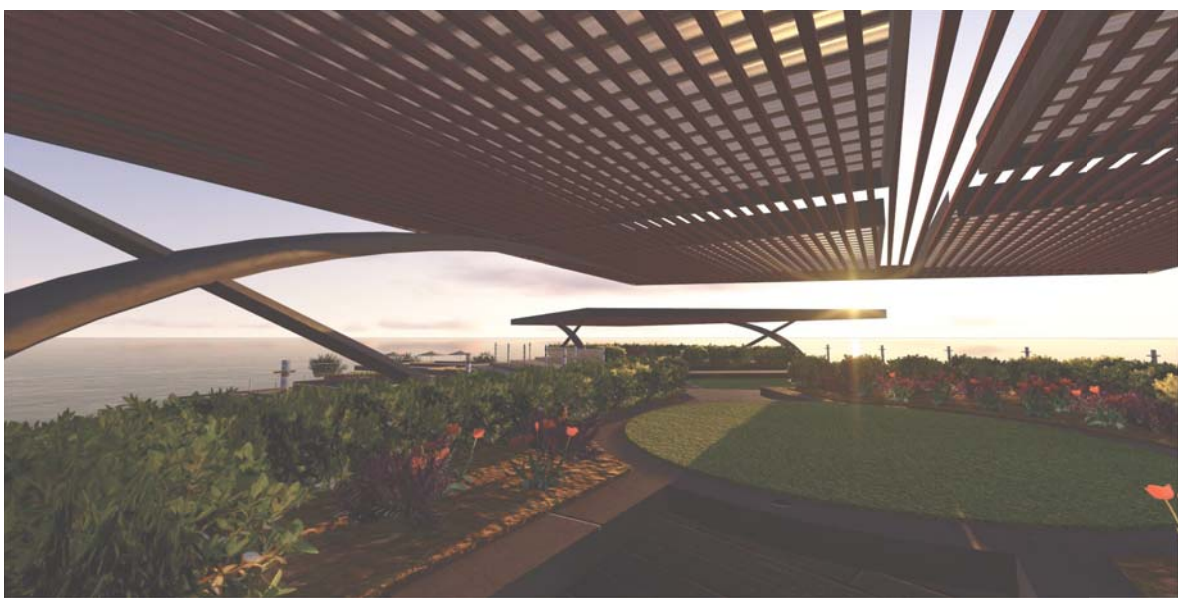
One-Time		Annual Income vs. Expense	
\$34.5 mil	Construction	Oceanographic Research	\$6 mil (\$0)
\$2.5 mil	Medical Equipment	Pharmaceutical Research	\$6 mil (\$0)
\$17.7 mil	Helicopter (Sikorsky S-92)	Rig Operations	\$0 (\$10 mil)
\$40 mil	Rig & Refurbishment	Medical Procedures	\$30 mil (\$2.5)
\$5 mil	Movement to Site		\$42 mil (\$12.5 mil)
\$99.7 mil		\$29.5 mil	

Return on Investment: ~ 40 months

Offshore Resort and Casino (ORCA)

One-Time		Annual Income vs. Expense	
\$87.7 mil	Construction	Hotel Revenue	\$78.3 mil (\$0)
\$8.2 mil	FFE	Other Revenue	\$6.6 mil (\$0)
\$43 mil	Transport	Recreation Revenue	\$10.9 mil (\$0)
\$5.9 mil	Recreational Equipment	Operations	\$0 (\$67.2 mil)
\$5 mil	Movement to Site	Wages	\$0 (\$6.39 mil)
\$0.75 mil	Mechanical Equipment		\$95.8 mil (\$73.59 mil)
\$151.49 mil		\$22.2 mil	

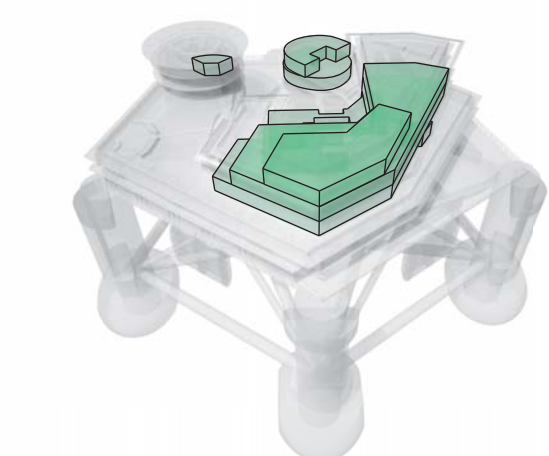
Return on Investment: ~ 7 years



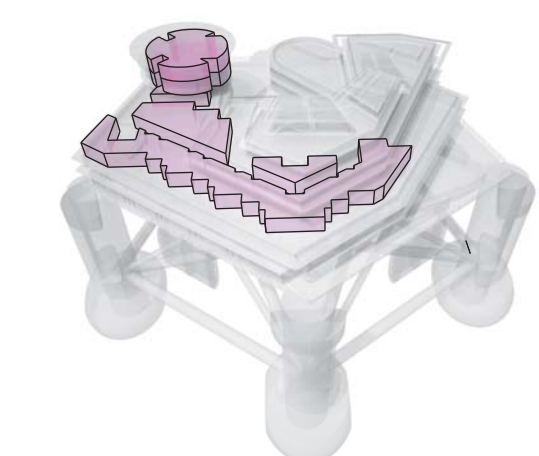
MORF proposes the combination of oceanographic and medical research facilities in a deep sea facility that is designed for the luxury and environmental comfort of its staff and patients.

Medical research includes both FDA approved and non-approved pharmaceutical and non-invasive techniques such as High Intensity Focused Ultrasound, Infusion and Off-Labeling.

The oceanographic facility provides research space for major marine research organizations such as SCRIPPS and Woods Hole.



Commons / Housing



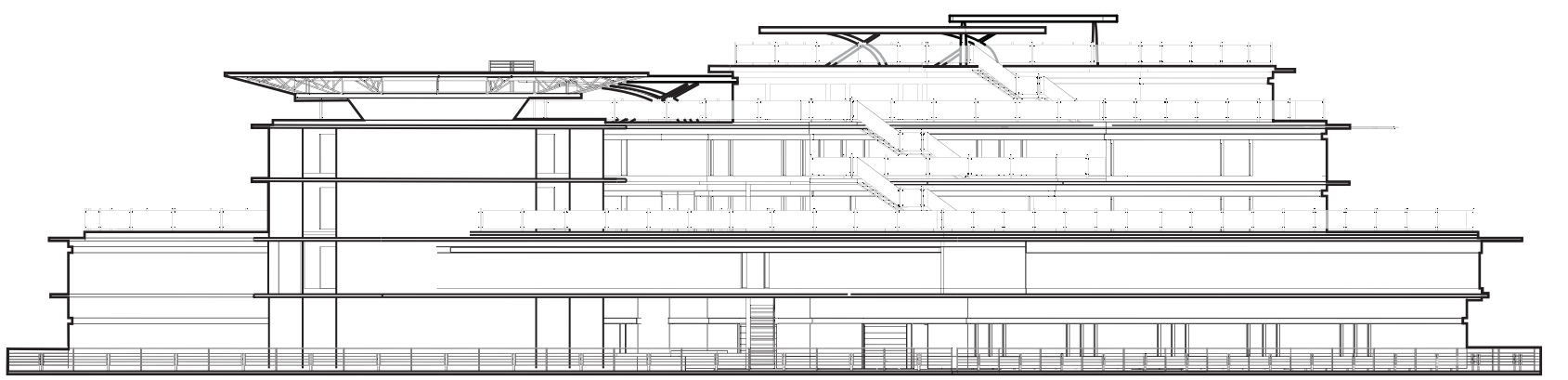
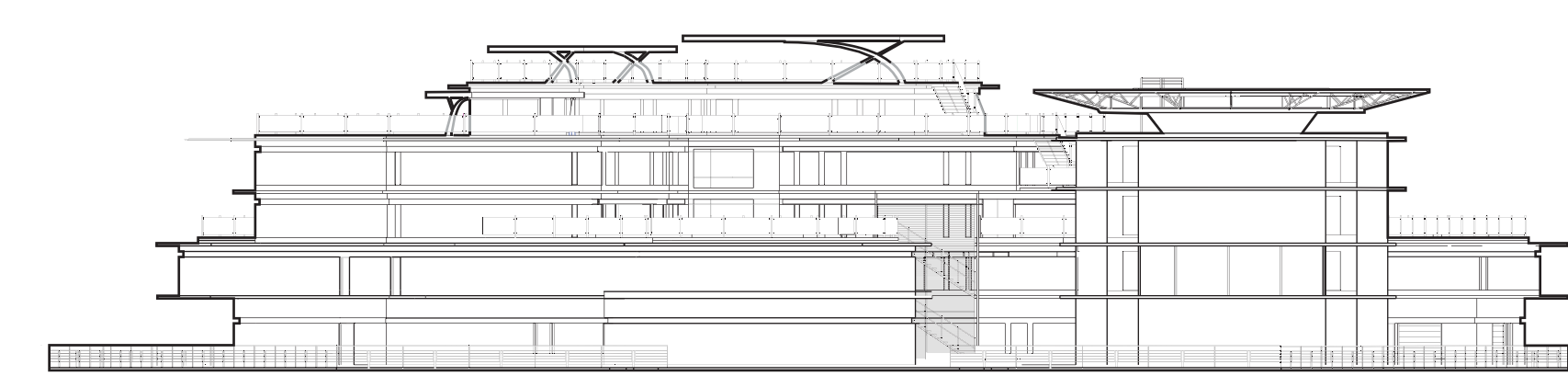
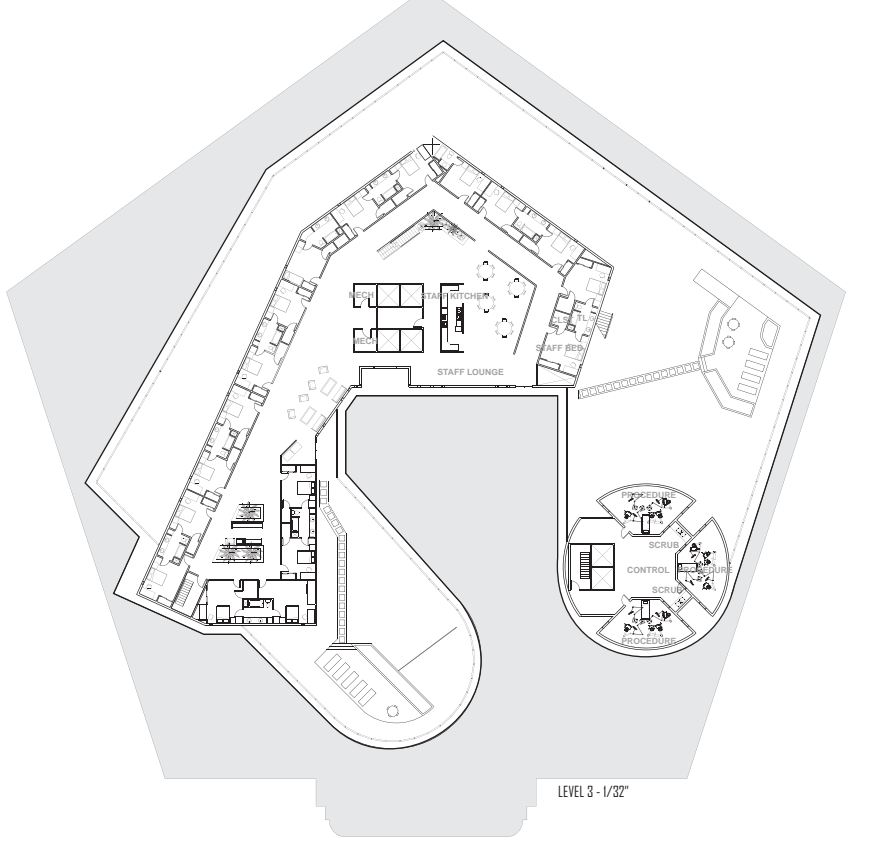
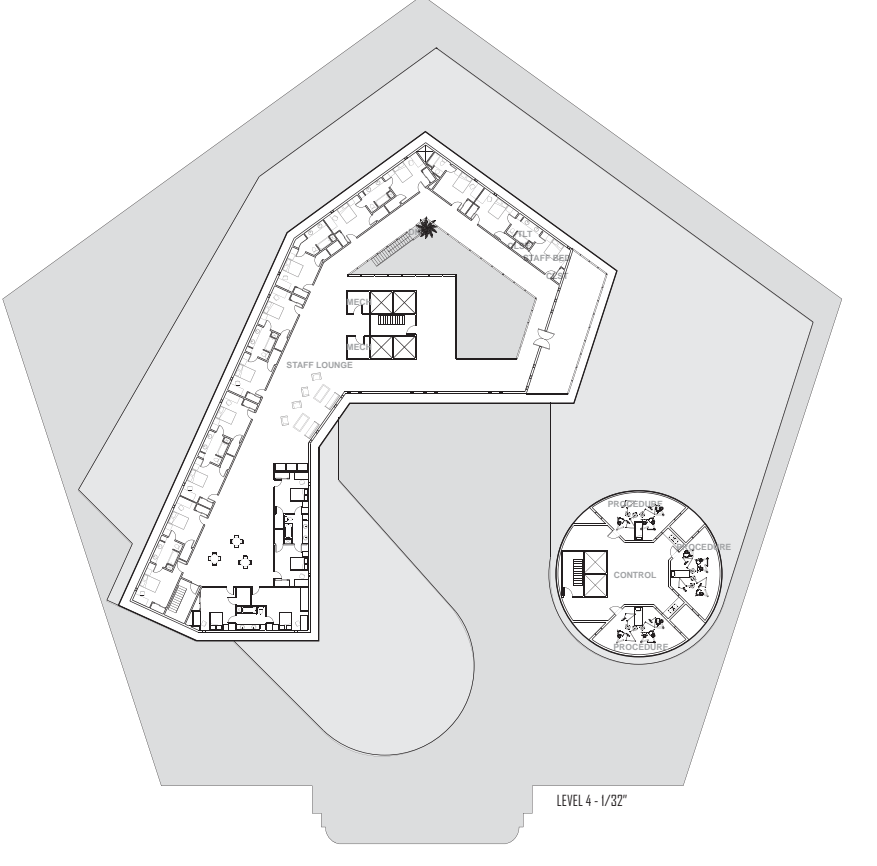
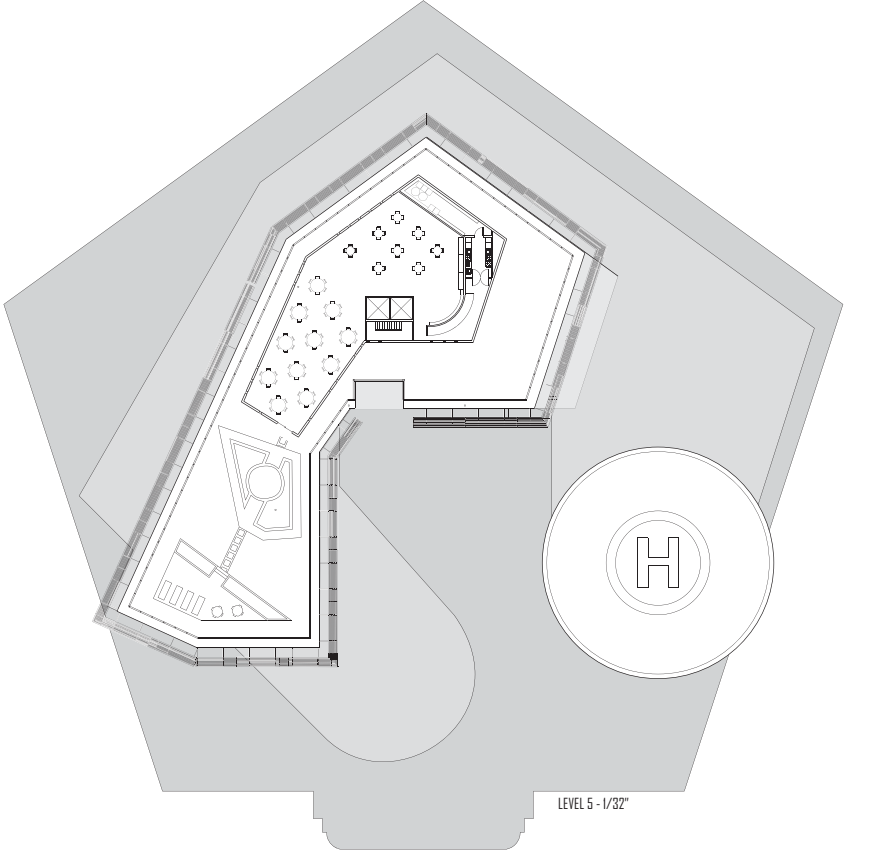
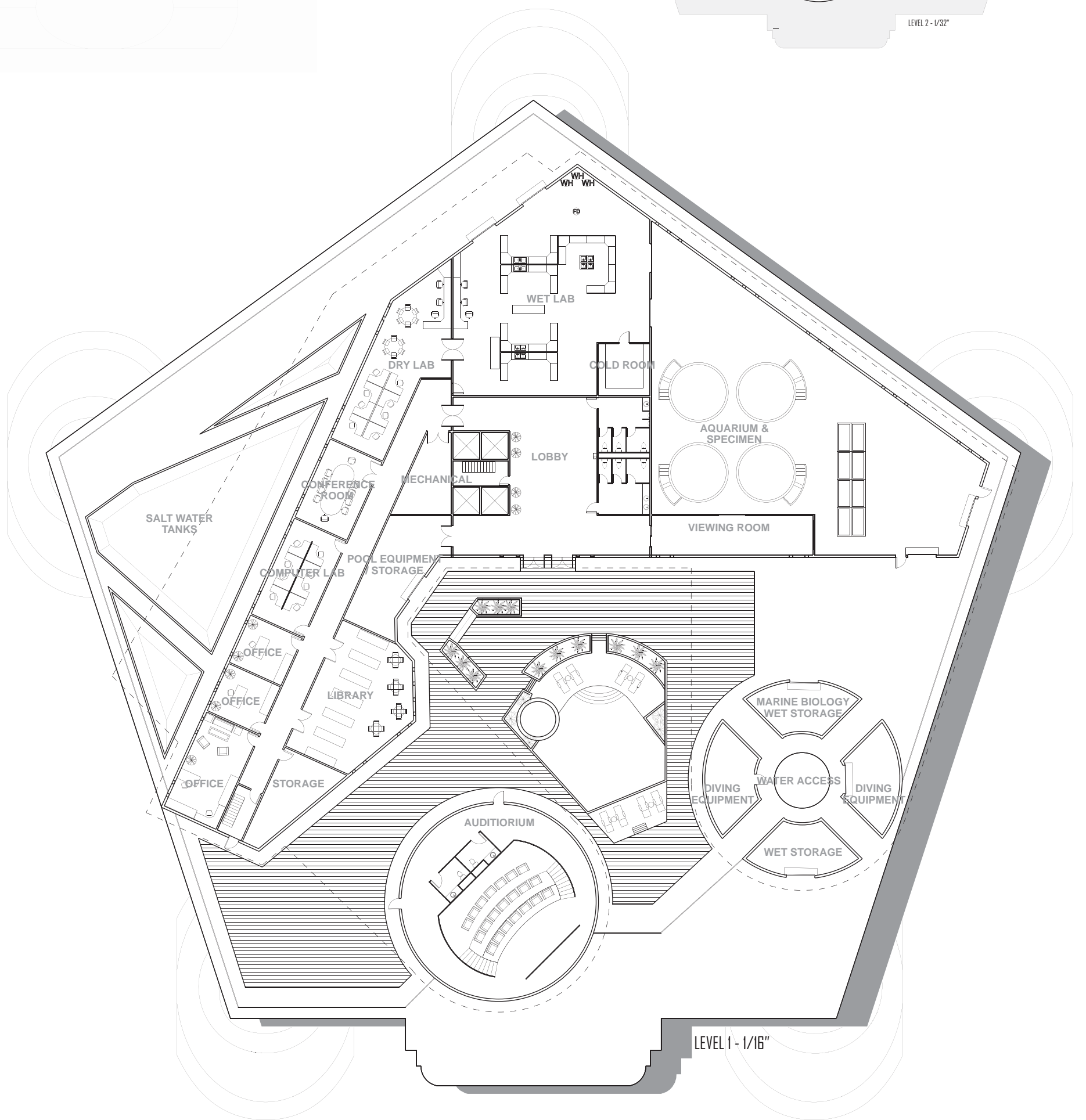
Medical



Marine Biology

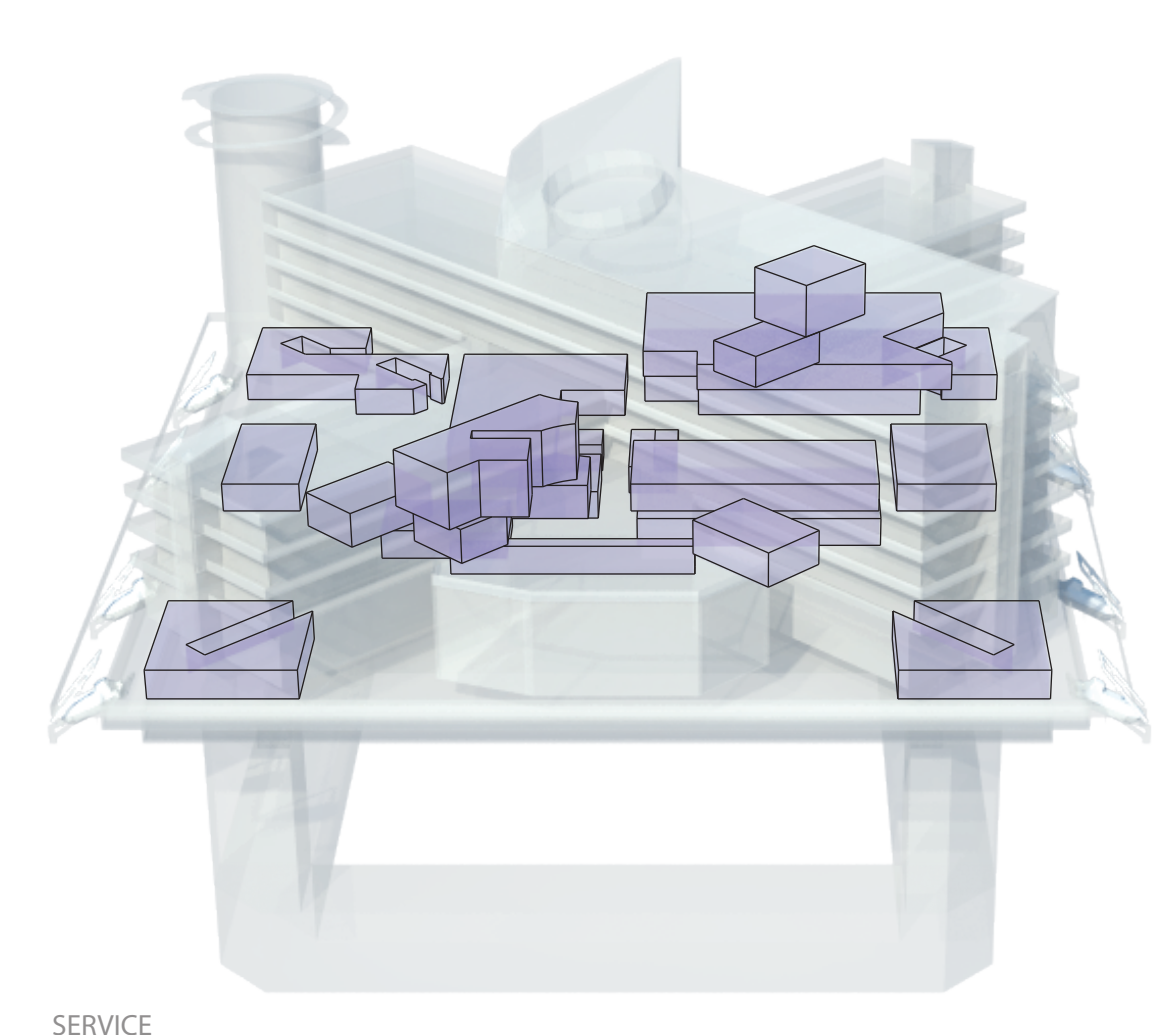
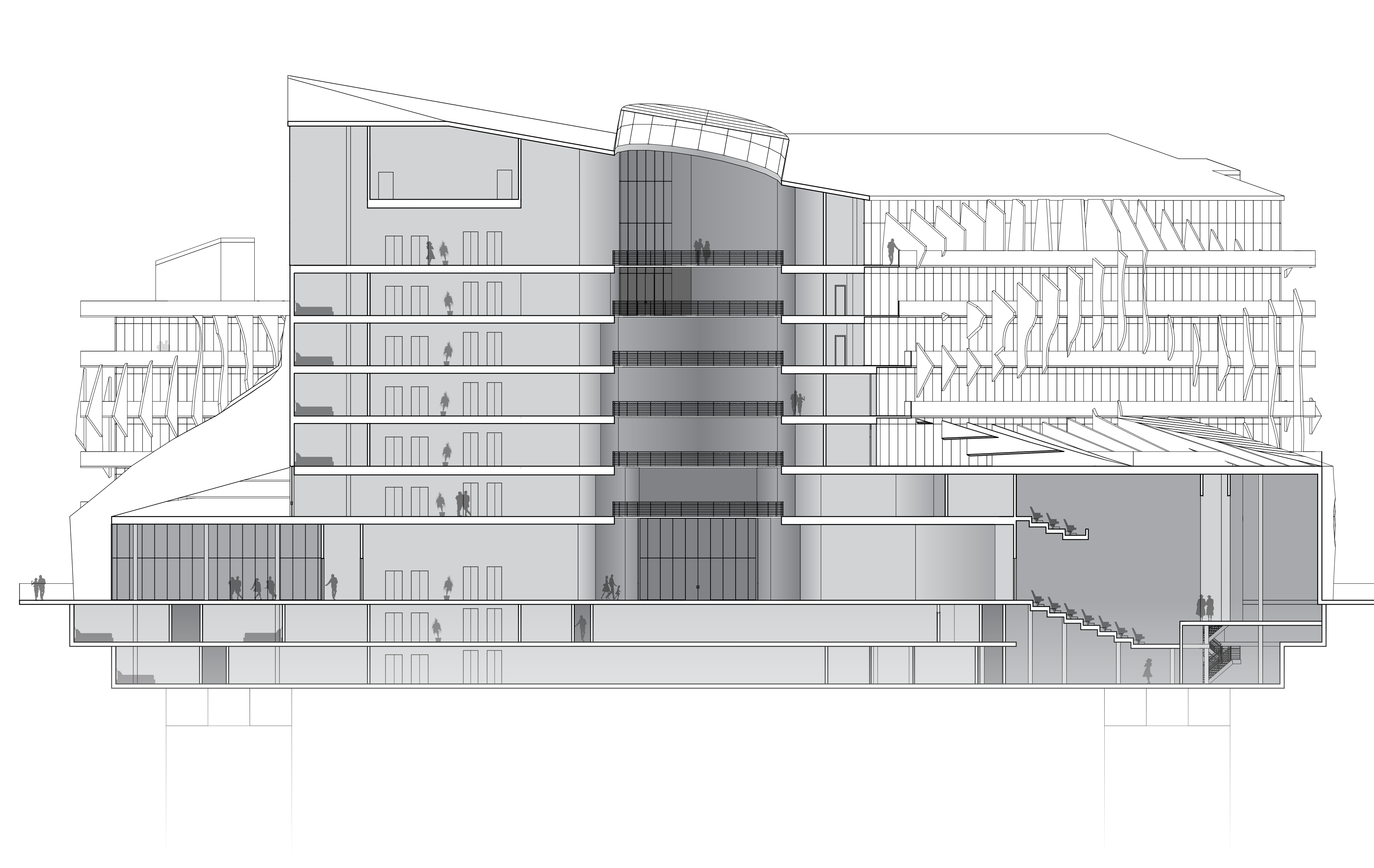
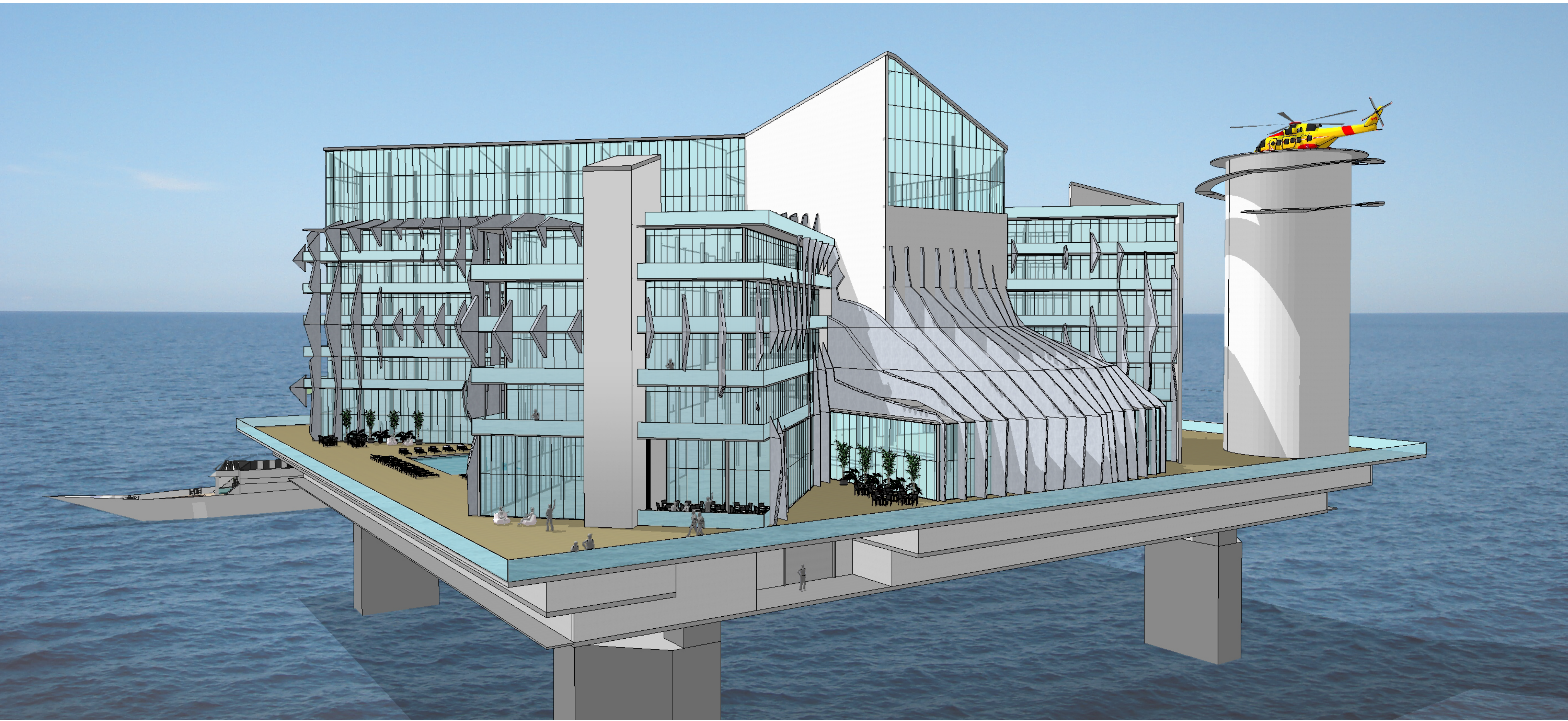


Pharmaceutical

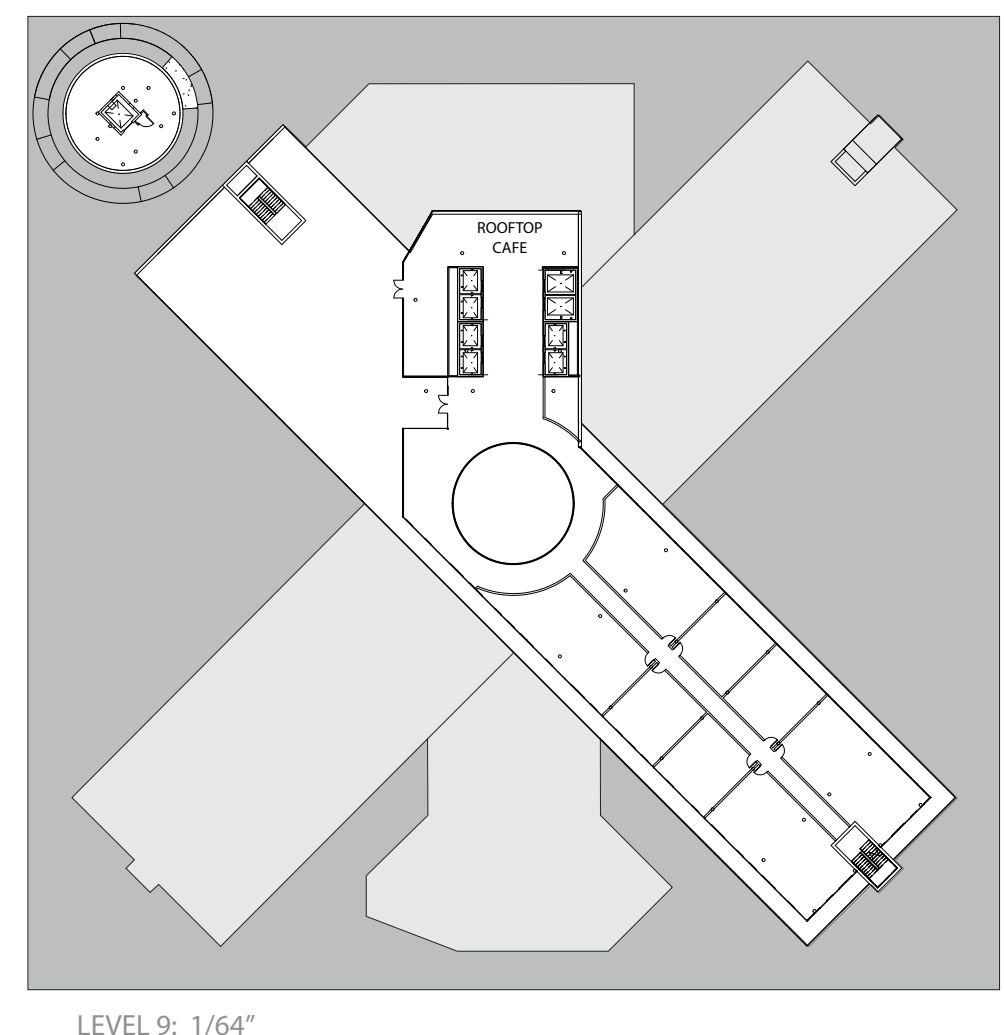


ORCA

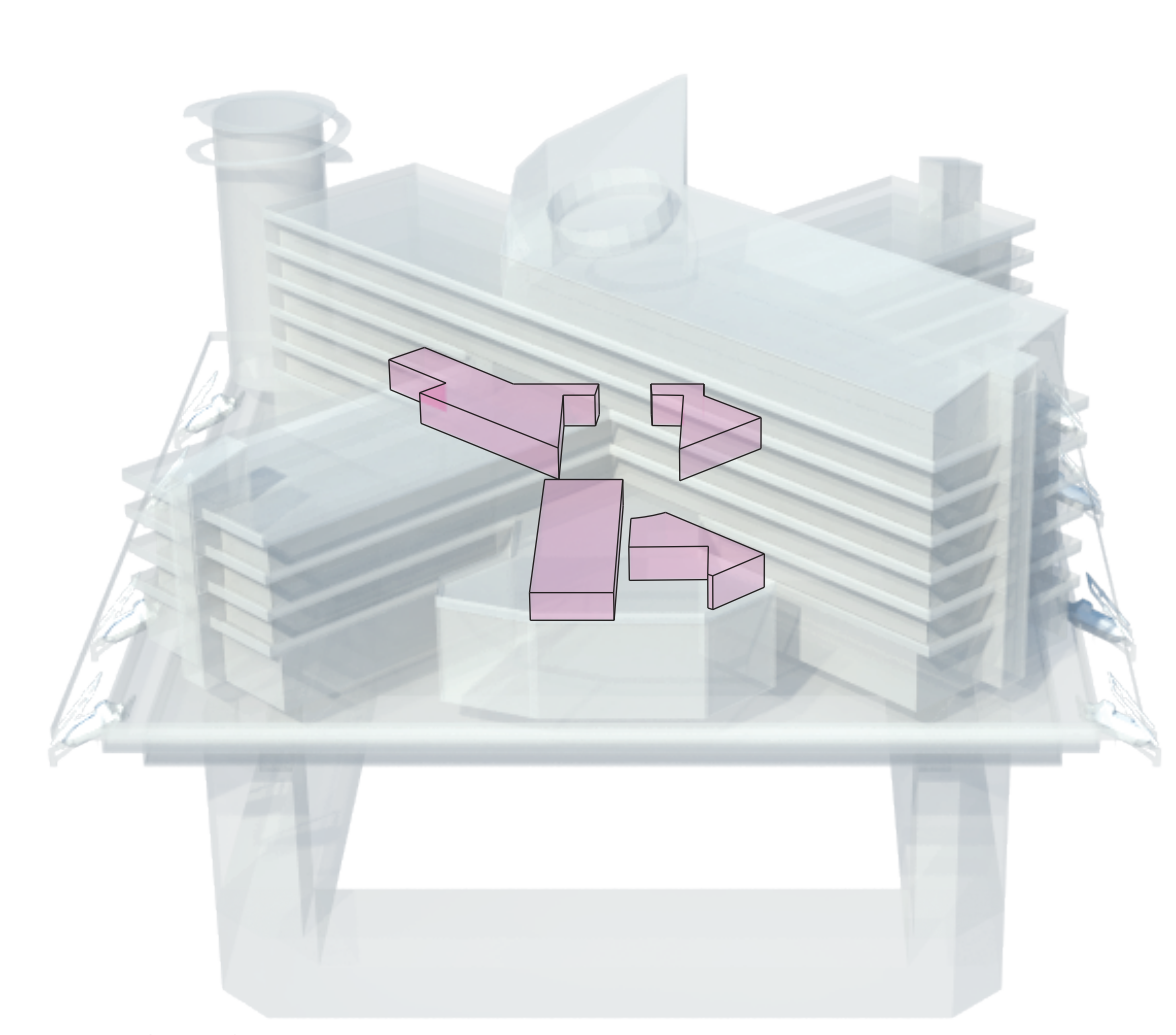
Ocean Resort and Casino



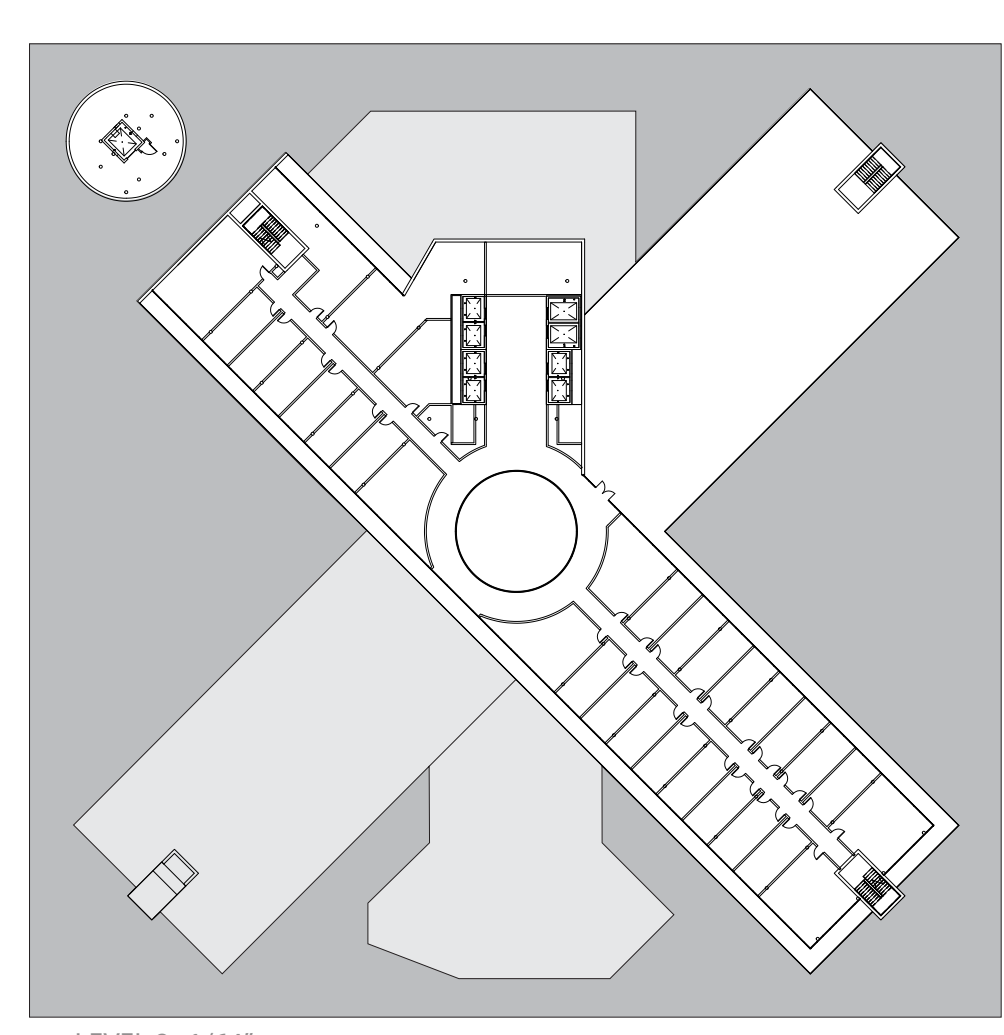
SERVICE



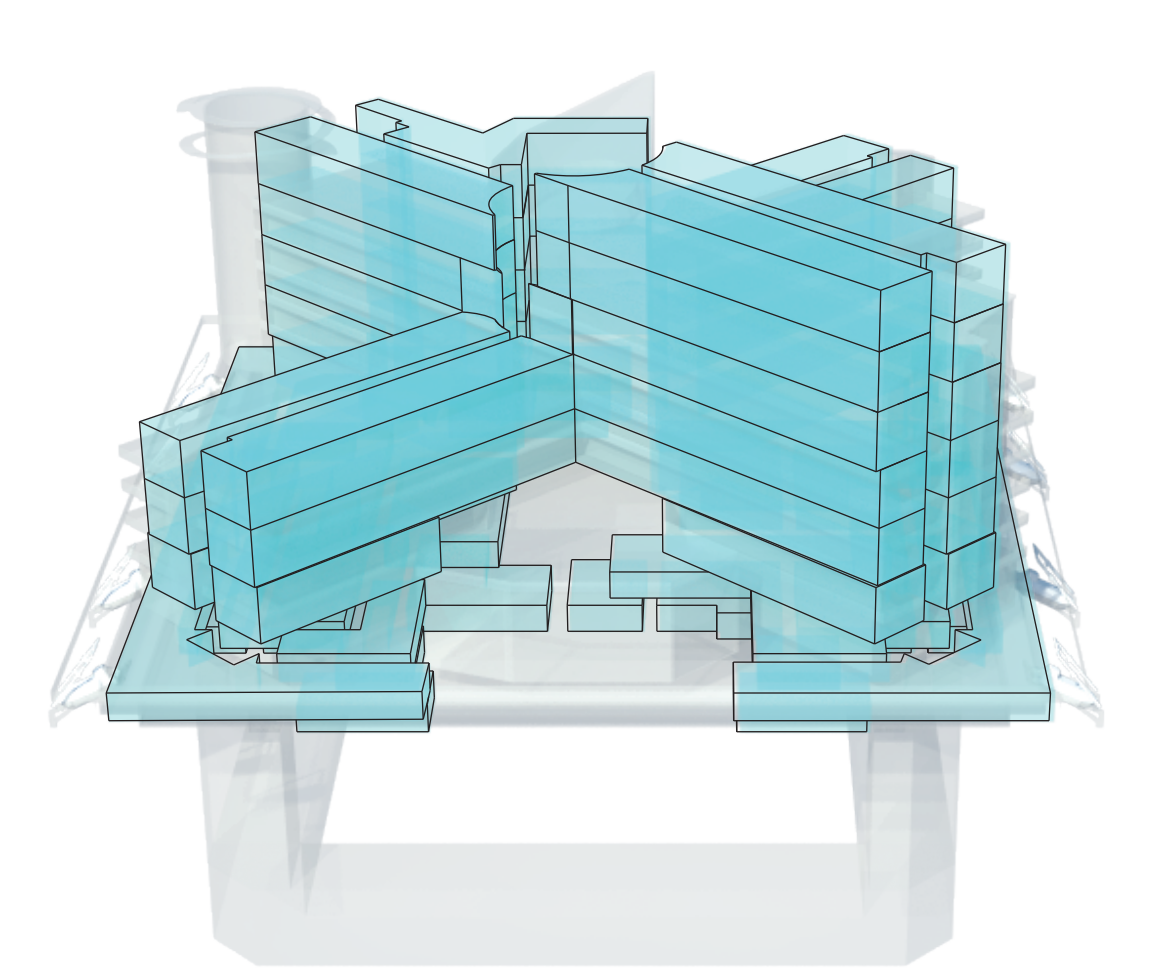
LEVEL 9: 1/64"



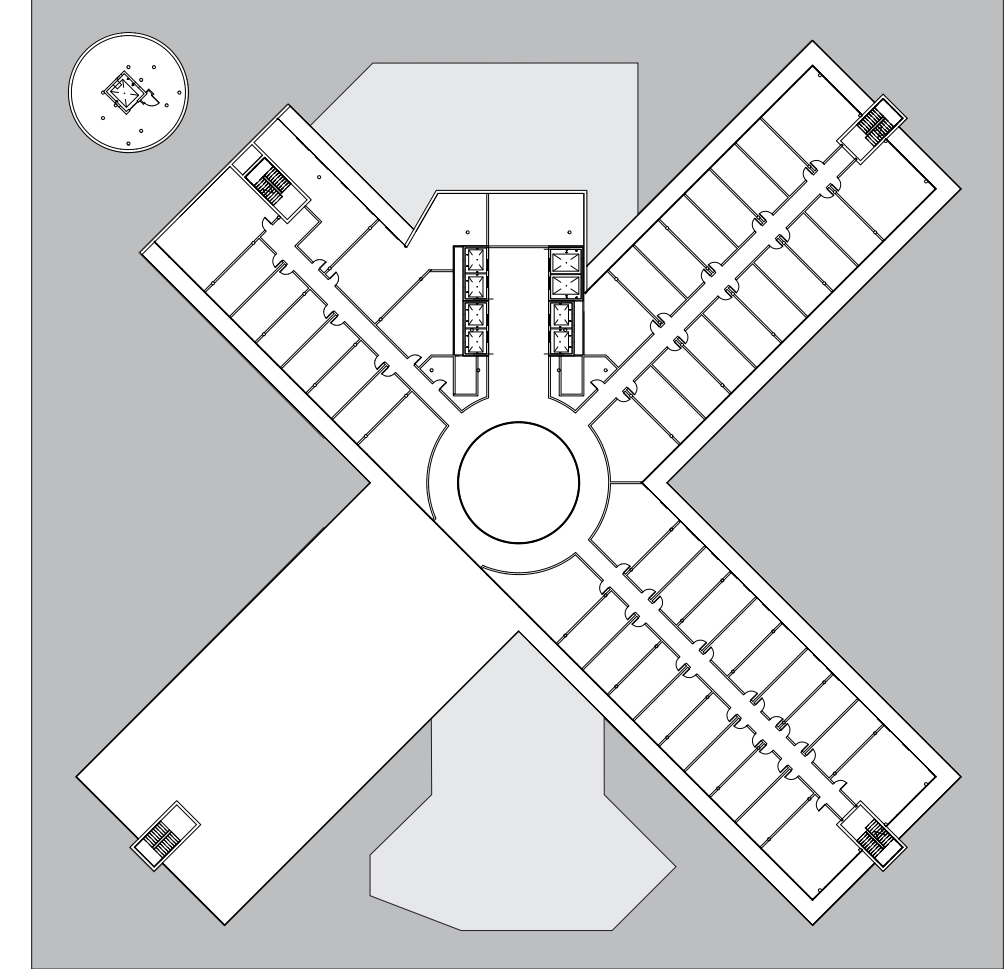
ADMINISTRATION



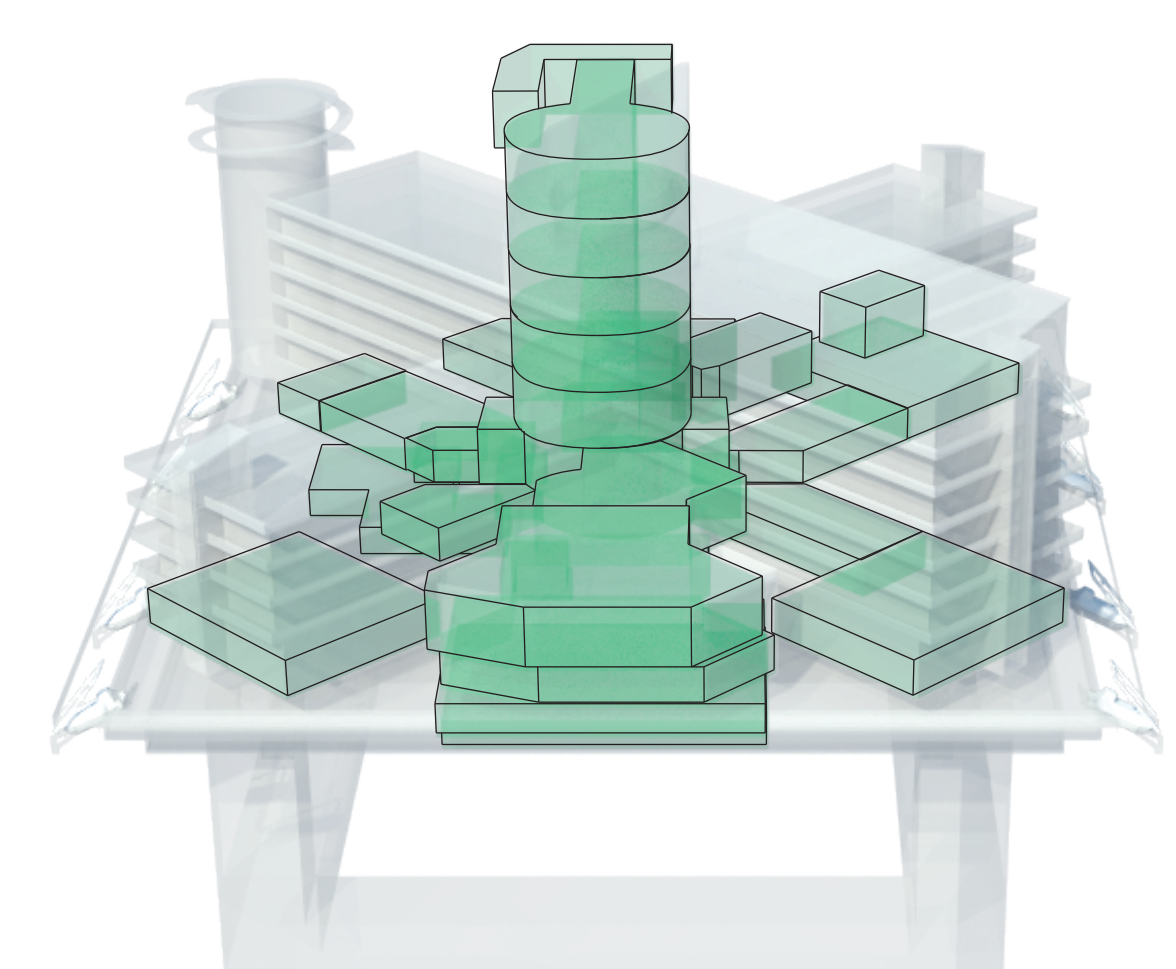
LEVEL 8: 1/64"



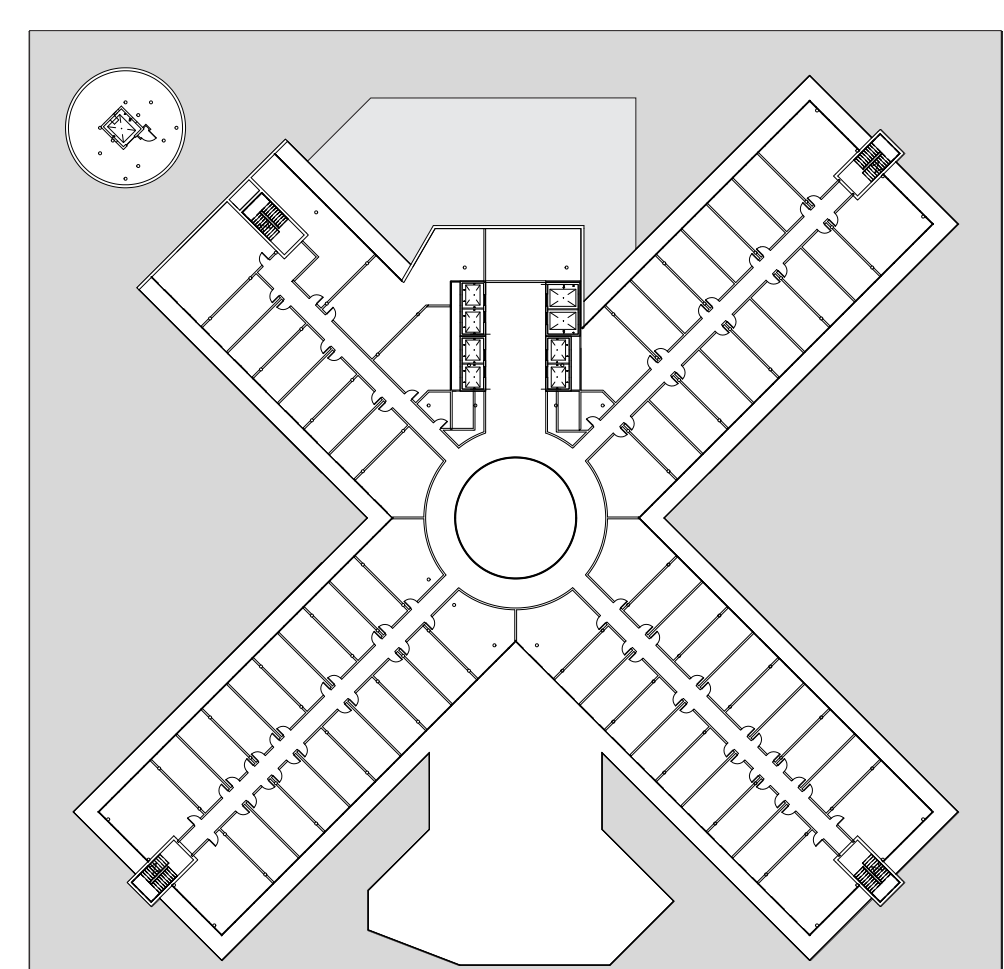
HOUSING



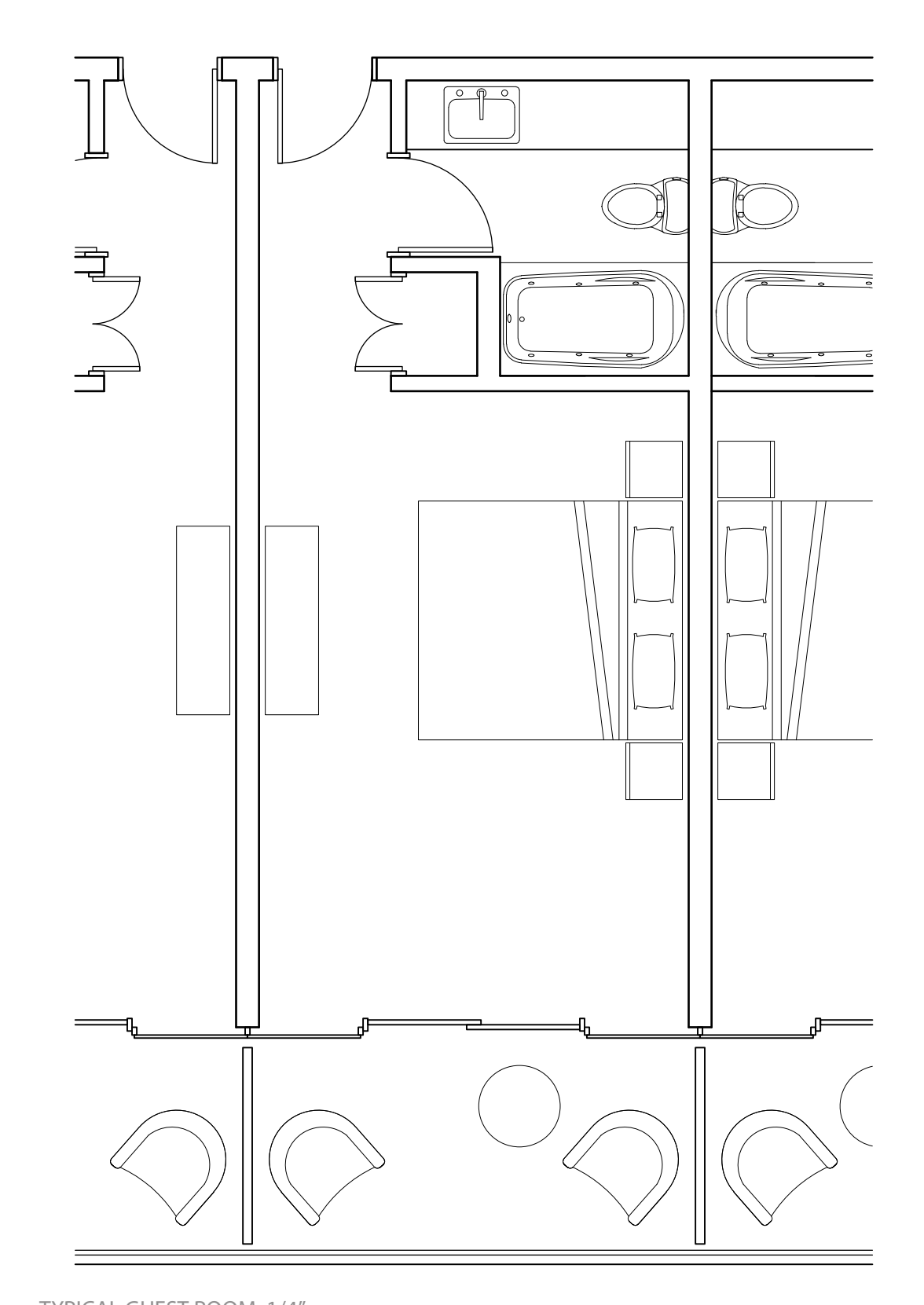
LEVEL 7: 1/64"



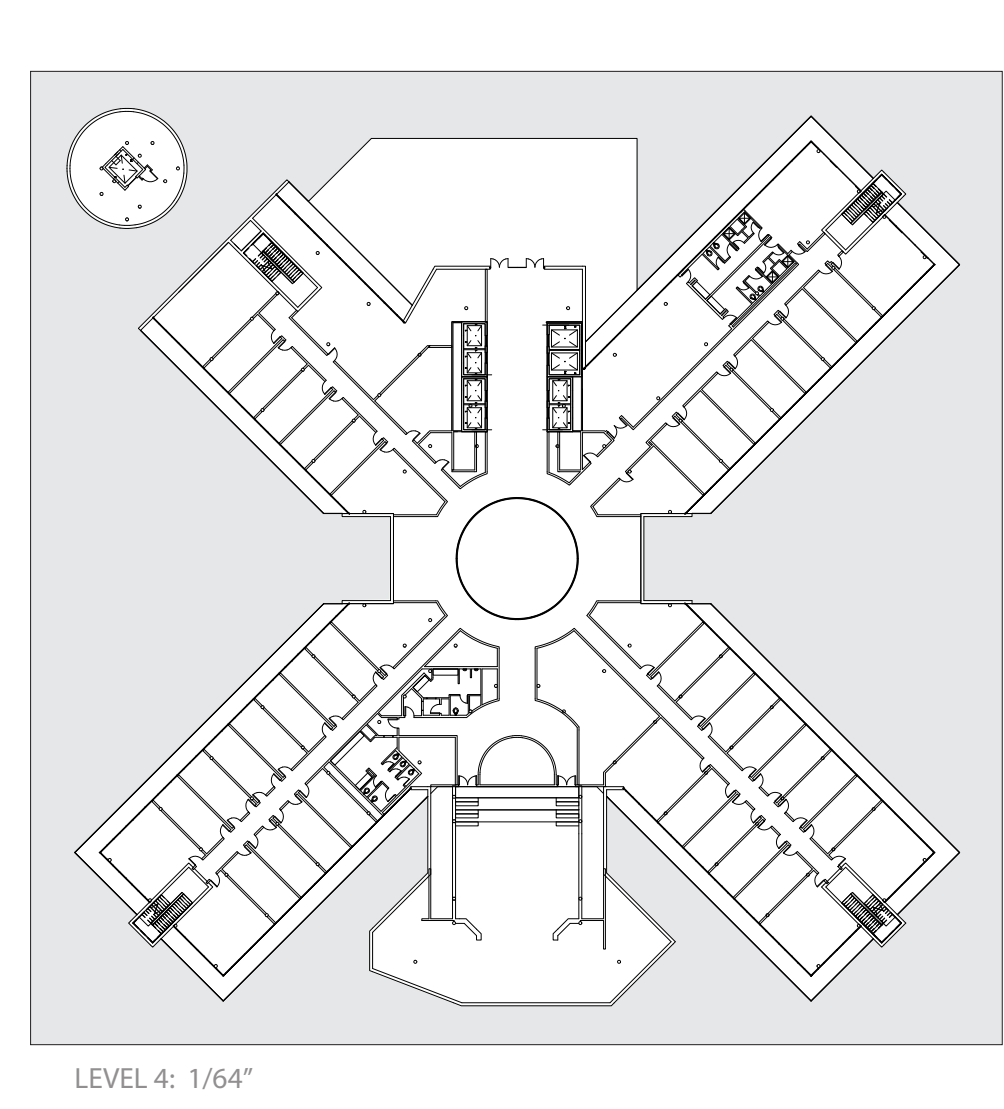
LEISURE & DINING



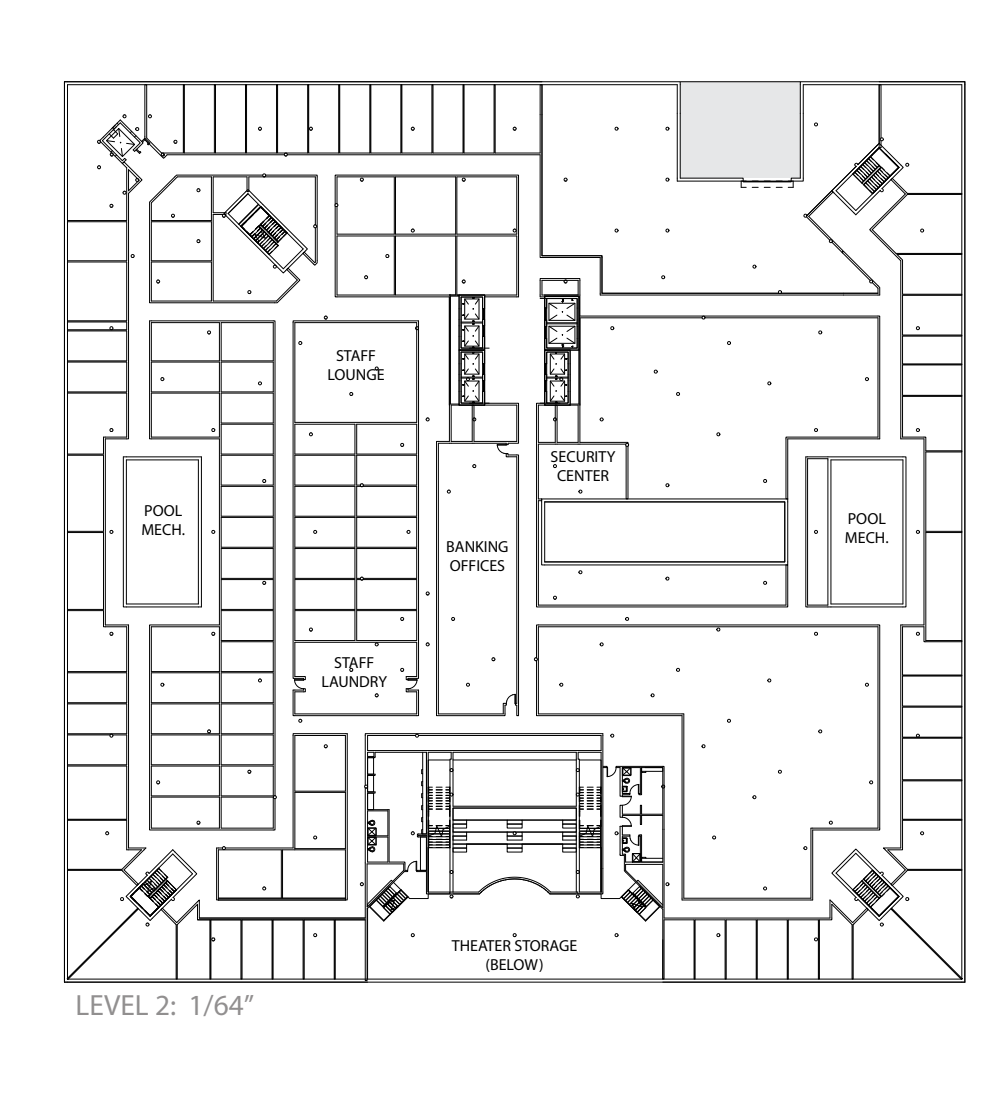
LEVEL 5&6: 1/64"



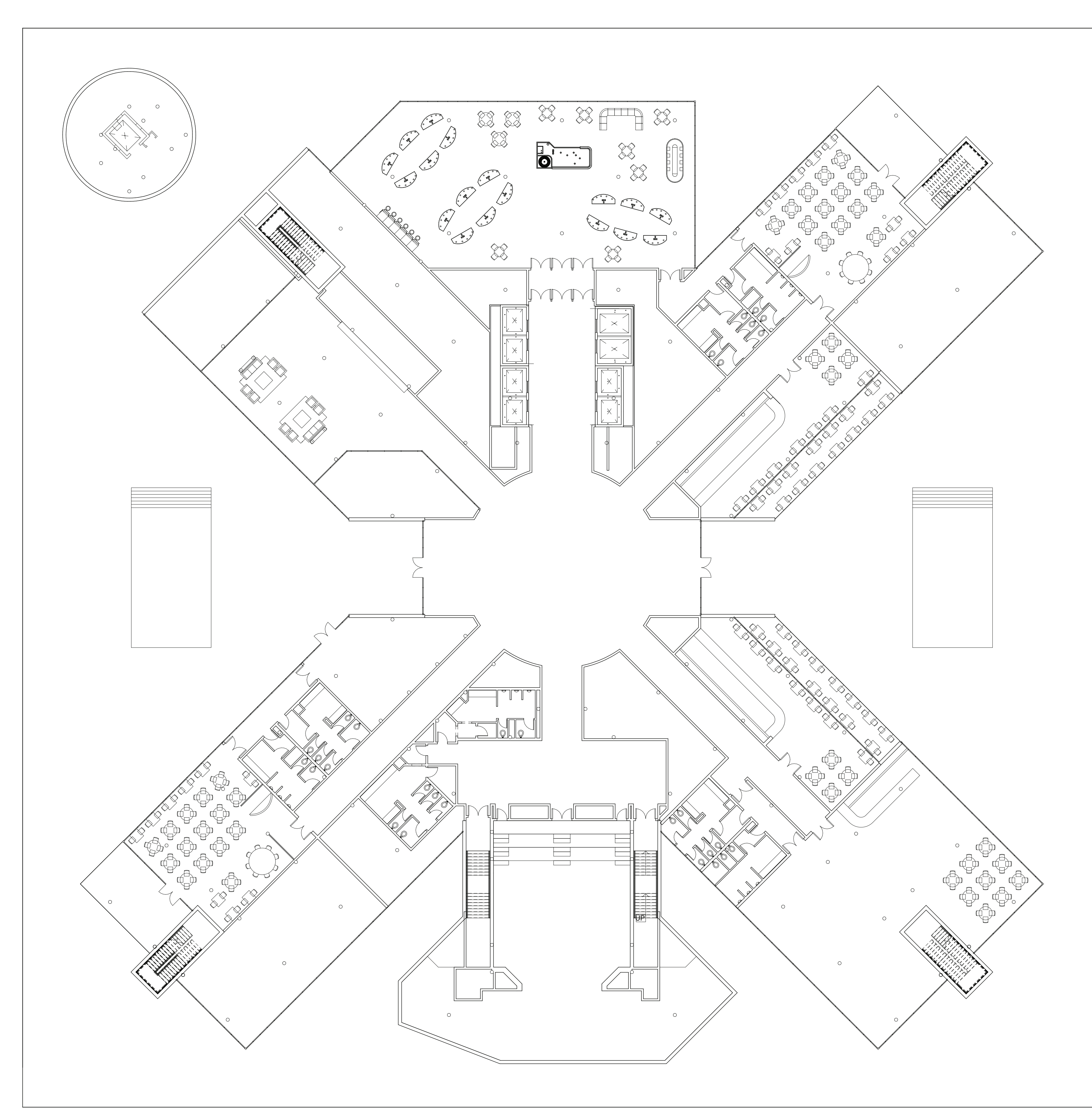
TYPICAL GUEST ROOM: 1/4"



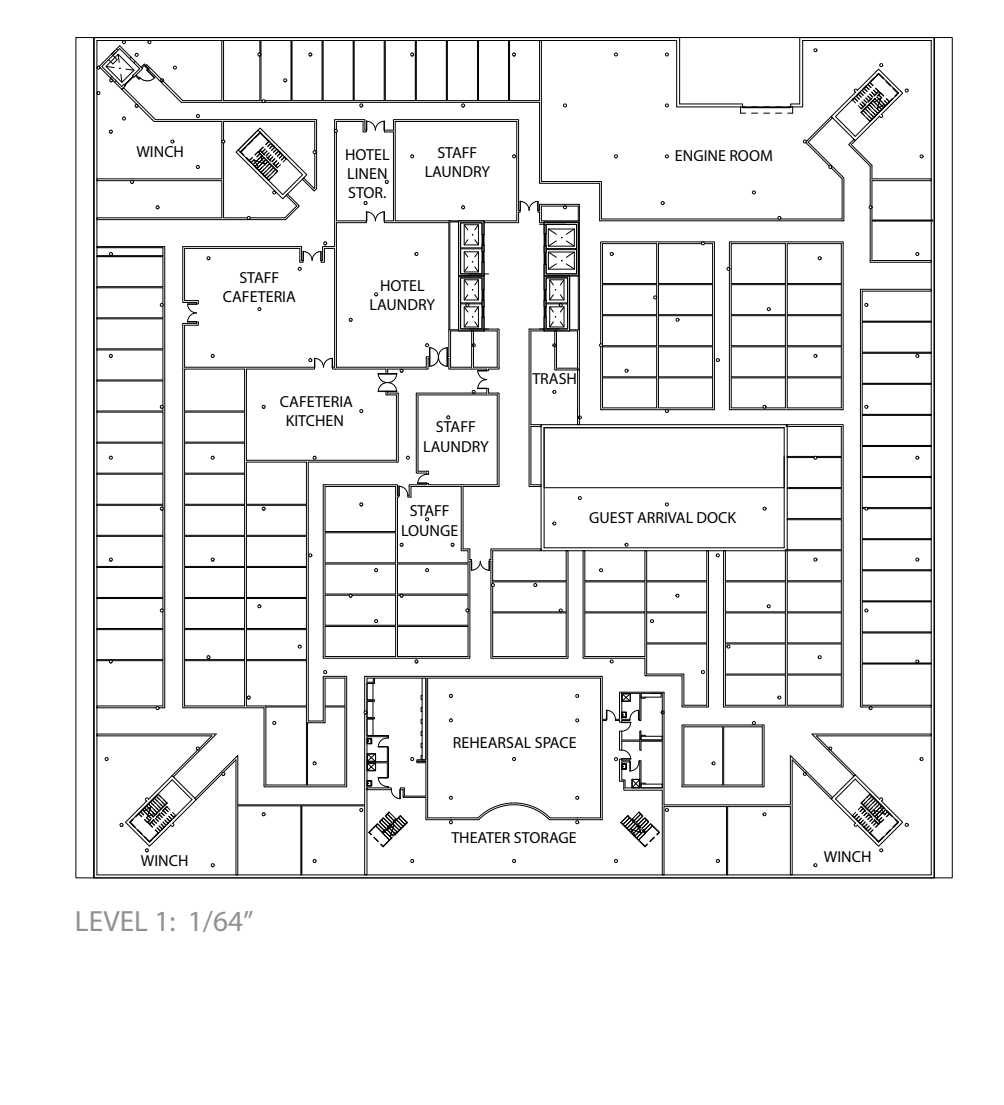
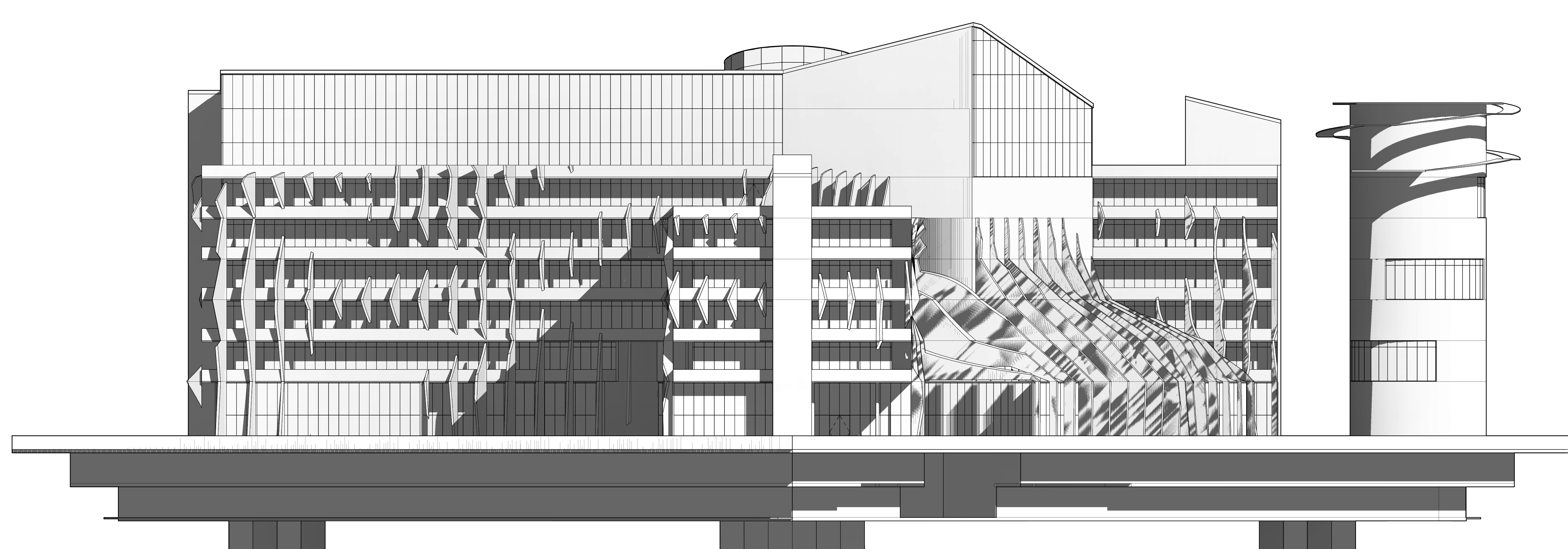
LEVEL 4: 1/64"



LEVEL 2: 1/64"



LEVEL 3: 1/16"



LEVEL 1: 1/64"